

BMW 5 Series
Touring



Sheer
Driving Pleasure

www.bmw.com



THE BMW 5 SERIES TOURING.

BMW EFFICIENT DYNAMICS.
LESS EMISSIONS. MORE DRIVING PLEASURE.

THE NEXT
100 YEARS



**THE ONLY LIMITS
ARE SET BY YOU.**





The BMW 5 Series Touring

PROGRESS AT ITS HIGHEST LEVEL.

- 06 Exterior**
Stylish elegance.
- 14 BMW ConnectedDrive**
Versatile and individual.
- 16 Interior**
Advancement in style.

Technology

INNOVATION IN MOTION.

- 18 BMW ConnectedDrive**
So connected, you're free.
- 22 BMW EfficientDynamics**
The technology package for reduced fuel consumption and emissions.
- 24 Engines**
The high-performance petrol and diesel powerplants.
- 26 BMW M550d xDrive**
Focused M power and high efficiency.
- 28 Chassis and safety**
Innovation designed for driving pleasure.

Equipment

AS INDIVIDUAL AS YOUR IMAGINATION.

- 32 BMW 5 Series Touring**
- 34 Luxury Line**
- 36 Edition Sport**
- 38 M Sport package**
- 40 BMW Individual**
- 42 Colours, upholstery and interior trims**
- 48 Standard / Optional equipment**
- 59 Original BMW Accessories**
Multifaceted and individual

Overview

THE ENTIRE RANGE AT A GLANCE.

- 60 Technical data and information on fuel consumption and CO₂ emissions**
- 62 BMW Service**
BMW Service, BMW Financial Services and BMW Experience.

Editorial

PRECISION IN EVERY DETAIL. PRESENCE IN EVERY LINE.

A passion for detail was essential when creating the progressive and stylish form of the BMW 5 Series Touring. This is clearly expressed in every design element, every line and every surface – from the front to the rear. The result is a distinctive, charismatic presence that radiates commanding character from every angle.

But dynamic design is not the only unique quality of the BMW 5 Series Touring. There is also the elegant and functional interior with its innovative and endlessly practical solutions. Additionally, there is a wide variety of intelligent services from BMW ConnectedDrive, ensuring the perfect connection between driver, vehicle and the outside world.

Another kind of perfection can be found in the combination of dynamics and efficiency. The inline six-cylinder diesel engine with BMW TwinPower Turbo technology in the BMW 530d, for instance, demonstrates this extremely well. Power is impressive and refined and yet, at the same time, fuel consumption and emissions values remain convincingly low.

These characteristics, along with a wealth of others so typical of BMW, mean that the BMW 5 Series Touring has never been in better shape.

Equipment of the model shown: BMW 530d xDrive Touring Luxury Line.

Engine:	BMW TwinPower Turbo inline six-cylinder diesel
Output:	190kW (258hp)
Wheels:	19" light alloy Turbine Styling 453
Exterior colour:	Jatoba metallic
Upholstery:	Exclusive Ivory White Nappa leather with exclusive stitching
Interior trim:	Fine-wood Fineline Anthracite

For information on fuel consumption and CO₂ emissions, see pages 60/61.



In 2016 the BMW brand will be celebrating its 100th anniversary. Find out more at www.next100.bmw



THE LOOK. THE LOOKS.

The balanced proportions promise style and safety. The elongated powerdome and forward-inclined double-kidney grille convey sportiness. And the strikingly designed taillights underscore precision in every detail. But if there's one feature that sums it all up, it could well be the headlights with their advanced optional Adaptive LED technology. With this innovation, they produce absolutely pure, white light for clear illumination of the road. They also give the front a determined, dynamic and charismatic look.





**VERSATILITY – JUST ONE
OF MANY STRONG POINTS.**

**TURNS
FREE TIME
INTO FREEDOM.**





**EVEN OVERSHADOWS
THE LANDSCAPE.**



THE JOURNEY IS THE DESTINATION.

The cockpit of the BMW 5 Series Touring does more than showcase innovative technology, it also offers a first-class entertainment experience with BMW ConnectedDrive Online Entertainment*. This option gives access to more than 12 million tracks from various genres. Additionally, with a flat-rate data plan, you can access unlimited music downloads which are stored directly on the vehicle's own hard disk. To help you enjoy your music while driving, and with minimal distraction, the iDrive Touch Controller allows input in a novel and intuitive new way. This enables you to enter letters and numbers by simply using your own handwriting. You can also enter navigation destinations or call up contact details. These features, and many others from BMW ConnectedDrive, make the driving experience in the BMW 5 Series Touring more flexible and convenient than ever before.

* May not be available in all countries.
Please consult your BMW partner.





FORWARD-LOOKING. FUNCTIONAL. 5 SERIES.

Clean lines, elegant surfaces and a stylish, contemporary atmosphere characterise the interior of the BMW 5 Series Touring. The generously proportioned, luxurious space indulges all on board with the most exclusive comfort, so even the longest drive becomes a relaxing experience. At the same time, the BMW 5 Series Touring presents a wealth of flexible functions. They include, for instance, the Comfort Access option. With this, a simple movement of your foot at the rear of the car suffices to open and close the tailgate. This innovation does not just make loading and unloading easier, though. It also impresses your passengers.



BMW ConnectedDrive So connected, you're free.



Every day our lives are becoming more and more connected. BMW drivers, however, enjoy better connections with the outside world than most. They can source information, communicate by telephone and email, keep an eye on the traffic and generally stay up to date while on the move. The services that so effectively network BMW vehicles with the outside world are grouped under one term – BMW ConnectedDrive.



BMW ConnectedDrive with its intelligent services and assistance systems, is ready with all the right equipment. BMW ConnectedDrive Services & Apps offer more freedom by providing versatile connections between the driver, vehicle and outside world. BMW ConnectedDrive Driver Assistance systems make driving a BMW safer and more comfortable. And intelligent systems make life easy for the driver and minimise the dangers of traffic.

For more information, go to:

➔ www.bmw.com/connecteddrive

CONNECTED DRIVE SERVICES.

The **BMW ConnectedDrive Services***¹ option provides the driver with a wide range of information, entertainment and service features on the road.

It also includes BMW Online, which enables you to access current, localised information such as weather, news and an online search powered by Google™, as well as various office functions. You can also combine individual services and features such as webcams, fuel price info, parking information, travel and hotel guides in the “Applications” menu.



The secure and comfortable use of selected smartphone applications is also included for an unlimited period of time. The ConnectedDrive Services option also includes access to the **BMW ConnectedDrive Store**, in which services and apps can be booked, extended and selected according to individual needs, at any time and from any place. The ConnectedDrive Services option also offers much more to make each journey in a BMW into a real experience.

* May not be available in all countries. Please consult your BMW partner.

¹ For further information on BMW ConnectedDrive, please visit www.bmw.com/connecteddrive

The images shown have been last updated in May 2015.

BMW CONNECTED DRIVE SERVICES & APPS – INTELLIGENT CONNECTIVITY.

The **BMW ConnectedDrive Services & Apps*** – configuring them according to your individual needs is now quicker and easier than ever before. Listening to your favourite kind of music on every journey? No problem with Online Entertainment.



ONLINE ENTERTAINMENT – MUSIC, WHEREVER YOU GO.

With Online Entertainment, a flat-rate account can be opened with any BMW music partner, such as Napster, and can also be used with any device supported by the provider.*¹ That means unlimited access to millions of songs. The Navigation System Professional in conjunction with ConnectedDrive Services is required for use.



INTERNET – INFORMATION AT YOUR FINGERTIPS.

Whether you need to check the balance in your bank account, place a bid on eBay or look something up in Wikipedia, the BMW ConnectedDrive Internet option ensures that you can do whatever you need to do online. To enable you to surf to your heart's content, the iDrive Controller in the centre console doubles as a computer mouse.



BLUETOOTH OFFICE – ALWAYS IN TOUCH.

Bluetooth Office enables BMW office functions such as emails, appointments, tasks, contacts and text messages to be shown on the Control Display or read out over the audio speakers using the read-aloud function. All compatible mobile end devices are listed at www.bmw.com/bluetooth.

BMW CONNECTED DRIVE DRIVER ASSISTANCE – A CO-DRIVER WHO THINKS AHEAD.

BMW ConnectedDrive Driver Assistance includes innovative functions that enhance safety and convenience, maximising your driving pleasure. Knowing in advance what sort of bend is coming up next? The full-colour BMW Head-up Display tells you.



BMW HEAD-UP DISPLAY² – KEEP YOUR FOCUS ON THE ROAD.

The full-colour BMW Head-Up Display projects relevant driving information into the driver's line of sight to enhance concentration and focus on the road ahead. Data including the current speed, navigation directions, Speed Limit Info including no-overtaking indicator and telephone and entertainment lists are displayed.



ACTIVE PROTECTION – SAFETY IN DEPTH.

Active Protection comprises a number of vehicle safety features. In a critical situation, for example, the safety belts are pre-tensioned, the seats are moved to an upright position and the windows are closed. Following an accident, the vehicle can also be automatically braked to a standstill. Additionally, Attention Assist monitors the driver's steering input and responds with appropriate recommendations in the Control Display.



BMW NIGHT VISION WITH PEDESTRIAN RECOGNITION AND ACUTE WARNING – THE BENEFIT OF FORESIGHT.

An optional infrared camera in the double kidney grille detects people and animals up to a distance of 300 metres, displaying images on the Control Display. Pedestrian recognition also gives a visual warning to indicate if people are moving close to the road, up to a distance of 100 metres ahead. This means that the driver can recognise potential danger significantly earlier and react more quickly. The new Acute Warning system helps in imminently critical situations, thereby offering even greater safety.

The images shown here are equipment examples. Features are individually specific to every BMW. Depending on the model, the Control Display and presentation of content may differ.

* May not be available in all countries. Please consult your BMW partner.

¹ May vary by country.

² Visibility of the display is limited with polarised sunglasses. BMW Head-Up Display functionality shown is dependent on equipment.



BMW EFFICIENT DYNAMICS.
LESS EMISSIONS. MORE DRIVING PLEASURE.

BMW EFFICIENT DYNAMICS – MAKING A LITTLE GO A LONG WAY.

BMW EfficientDynamics is the strategy developed by BMW to minimise fuel consumption and emissions while simultaneously increasing dynamics and driving pleasure. It is a comprehensive technology package that includes the drivetrain, energy management and the vehicle concept – and is standard in every BMW.

The new generation of BMW TwinPower Turbo petrol and diesel engines plays the central role when it comes to the improved performance and lower fuel consumption in BMW vehicles. Increased efficiency also comes from optimised aerodynamics and BMW EfficientLightweight construction, which reduces weight by using the right materials in the right places while, at the same time, increasing vehicle rigidity. Here, as the only major manufacturer with such clear focus on the ultra-light yet high-strength material carbon (CFRP), BMW is demonstrating clear innovation leadership. The BMW EfficientDynamics package additionally includes intelligent energy management and ECO PRO mode, which is selected by the driver and promotes a fuel-efficient driving style. Another key area for BMW is the development of pioneering drive methods such as BMW eDrive technology, with its purely electric operation, and plug-in hybrids.

BMW EFFICIENT DYNAMICS INNOVATIONS IN THE BMW 5 SERIES TOURING AT A GLANCE.

The **Automatic Start/Stop function** temporarily switches off the engine during short vehicle stops such as traffic lights or in traffic jams to reduce fuel consumption. When the clutch (manual transmission) or the brake (Steptronic transmission) is applied, the engine starts up again automatically and in a fraction of a second.

BMW TwinPower Turbo technology combines the petrol engines with a TwinScroll turbocharger with Valvetronic, Double-VANOS and High Precision Injection. With the diesel engines, CommonRail direct injection combines a turbocharger (535d and 525d with two-stage turbocharging) with variable turbine geometry. These measures significantly reduce fuel consumption in all powerplants, while, at the same time, considerably increasing the power across a wide speed range.

With **Brake Energy Regeneration**, the alternator generates electricity mainly when the driver lifts off the accelerator pedal or applies the brakes. Previously unused kinetic energy is converted into electric power and fed into the battery.

Unlike conventional hydraulic systems, **Electric Power Steering** uses energy only when the steering wheel is turned. On straight roads, the electric motor remains inactive.

Aerodynamics. Carefully optimised aerodynamics measures ensure an excellent drag coefficient and, therefore, a positive effect on overall efficiency. A host of features contribute. They include flat underbody panelling, the optimised design of the front apron and air intakes and airflow management in the wheel-arches.

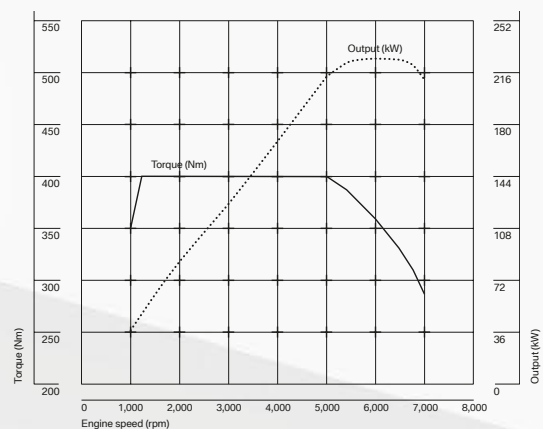
The **Optimum Shift Indicator** recommends the most suitable gear for fuel-efficient driving. The system also recommends when to shift up or down and adapts to individual driving behaviour.

The **eight-speed Steptronic transmission** provides significantly higher gearshifting and driving comfort thanks to closely defined gear ratios and minimised changes in engine speed at each transition. This also leads to an impressive increase in dynamism and reduced fuel consumption.

Fuel-consumption-friendly **ECO PRO mode** intelligently adapts accelerator pedal and gearbox responses while also moderating the heating/air conditioning systems. ECO PRO tips further improve fuel efficiency with suggestions that optimise driving behaviour with the bonus range function indicating how many extra kilometres have been gained in the process. The results, depending on driving style, can lead to reductions in fuel consumption by up to 20 per cent. An additional five per cent saving is possible through the Coasting function, Route-Ahead Assistant and, in conjunction with the Steptronic transmission and the Navigation System Professional, ECO PRO Route. The saving potential quoted relates to the findings of internal BMW studies.

EVERYTHING REVOLVES AROUND JOY. SEVERAL THOUSAND TIMES PER MINUTE.

The petrol engines. Power, refinement and superb revving ability are the hallmarks of every BMW engine. It follows, naturally, that the engines available for the BMW 5 Series are all in line with the BMW EfficientDynamics philosophy. The guiding objective is to deliver power to the road while reducing fuel consumption and CO₂ emissions to a minimum. So whatever engine you choose, you can be certain of complete driving pleasure – for all the right reasons.



Powerpack 535i: peak torque of 400Nm is on tap from an extremely low engine speed of 1,200rpm.

BMW 550i.

The top of the range BMW TwinPower Turbo V8 engine combines two turbochargers with Valvetronic, Double-VANOS and High Precision Injection. This delivers a full 650Nm of maximum torque between 2,000 and 4,500rpm. The engine, with its 330kW (450hp), accelerates the vehicle from 0 to 100km/h in an impressive 4.7 seconds. And thanks to High Precision Injection, fuel is used with the utmost efficiency.

BMW 535i.

The BMW TwinPower turbo inline six cylinder petrol engine with its 3.0-litre capacity combines Valvetronic, Double-VANOS and High Precision Injection with a TwinScroll turbocharger. This intelligent innovations package reduces fuel consumption to just 8.1–8.5l per 100km¹ and CO₂ emissions to 188–198g/km¹. It also generates impressive output of 225kW (306hp), max. torque of 400Nm and delivers acceleration from 0 to 100km/h in only 5.8s. Top speed is 250km/h (restricted).

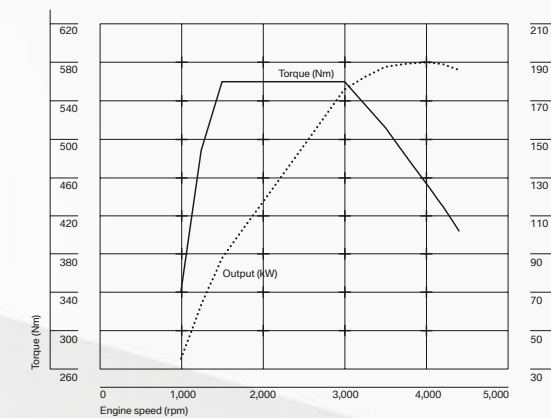
BMW 528i.

The BMW TwinPower Turbo four-cylinder petrol engine offers its peak torque of 350Nm at an extremely low 1,250rpm. And thanks to BMW TwinPower Turbo technology, which combines a TwinScroll turbocharger with Valvetronic, Double-VANOS and High Precision Injection, the 180kW (245hp) powerplant accelerates the vehicle from 0 to 100km/h in 6.4s. Maximum speed is 248km/h; average fuel consumption is 7.0–7.4l per 100km¹; CO₂ emissions are 162–172g/km¹.

BMW 520i.

The BMW TwinPower Turbo four-cylinder petrol engine, with its 2.0-litre capacity, deploys a TwinScroll turbocharger with Valvetronic, Double-VANOS and High Precision Injection. This results in powerful character and, at the same time, high efficiency. Output of 135kW (184hp) and maximum torque of 270Nm enables acceleration from 0 to 100km/h in 8.3s and a top speed of 226km/h. Combined fuel consumption is 6.7–7.2l per 100km¹ and CO₂ emissions, combined, are 157–167g/km¹.

The diesel engines. All BMW 5 Series diesel engines are equipped with BMW TwinPower Turbo technology and impress with their refined power and the highest efficiency. The latest CommonRail technology ensures running smoothness and fuel economy combined with immediate responsiveness and enormous revving ability. All variants feature lightweight aluminium design and, of course, are fitted with a maintenance-free particle filter as standard. BMW BluePerformance technology, which significantly reduces nitrogen oxide emissions, is also available as standard. As a result, the vehicles also comply with the EU6 emissions standard.



High performance and low emissions – the efficient BMW TwinPower Turbo inline six-cylinder diesel engine in the BMW 530d.

BMW 535d.

With its BMW TwinPower Turbo technology, the range-topping diesel combines CommonRail direct injection and two-stage turbocharging with variable turbine geometry. The inline six-cylinder engine, which delivers its maximum torque of 630Nm from 1,500rpm and generates 230kW (313hp), appeals with its smooth running and extremely spontaneous responses. The other key facts on this engine, also available as a BMW 535d xDrive version: 0 to 100km/h in 5.4 seconds (535d xDrive: 5.3s), average fuel consumption of 5.5–5.9l (535d xDrive: 5.9–6.2l) per 100km¹. In addition, the all-wheel drive system improves traction and tracking stability.

BMW 530d.

The BMW TwinPower Turbo inline six-cylinder diesel engine, with a 3.0-litre capacity, combines CommonRail direct injection and a turbocharger with variable turbine geometry. At just 1,500rpm, the 190kW (258hp) engine develops impressive torque of 560Nm. The sprint from 0 to 100km/h takes 5.9s (530d xDrive: 5.9s). Average fuel consumption is only 5.3–5.7 litres (530d xDrive: 5.7–6.0l) per 100km¹ and CO₂ emissions average at a low 139–149g/km¹ (530d xDrive: 149–159g/km¹).

BMW 525d.

The new-generation BMW TwinPower Turbo four-cylinder diesel engine, with its 2.0-litre capacity and output of 160kW (218hp), combines CommonRail direct injection and 2-stage turbocharging with variable turbine geometry. Maximum torque of 450Nm is reached at 1,500rpm. The BMW 525d accelerates from 0–100km/h in 7.2s and top speed is 240km/h. Combined fuel consumption: 5.2–5.6 litres of diesel per 100km¹. Combined CO₂ emissions: 136–146g/km¹.

BMW 520d.

The new BMW TwinPower Turbo four-cylinder engine generates an impressive 140kW (190hp) from its 2.0-litre capacity. It combines CommonRail direct injection and a turbocharger with variable turbine geometry and, with its 400Nm of peak torque accessible between 1,750 and 2,500rpm, reaches the 100km/h mark in 8.1s (520d xDrive: 8.2s). Top speed is 229km/h (520d xDrive: 220km/h). Fuel efficiency: 4.6–5.0l (520d xDrive: 4.8–5.2l) per 100km¹; CO₂ emissions: 122–132g/km¹ (520d xDrive: 127–137g/km¹) in the combined test cycle. Additionally, BMW xDrive increases traction and directional stability.

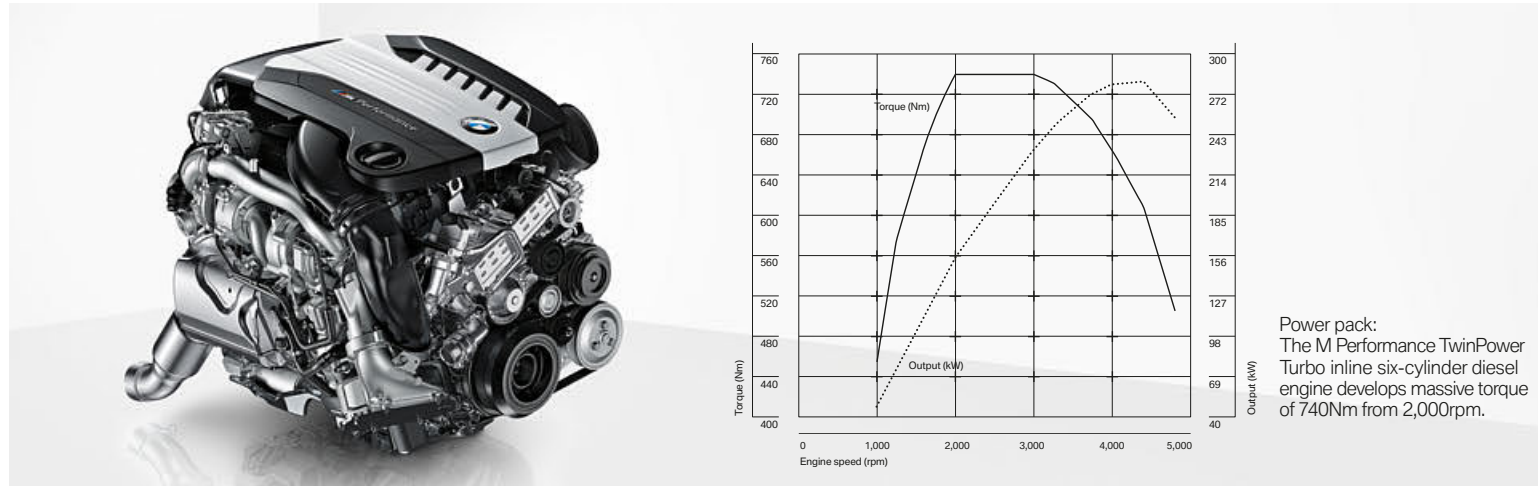
BMW 518d.

The new-generation BMW TwinPower Turbo four-cylinder 2.0-litre diesel engine promises driving pleasure combined with efficiency and low emissions. It delivers output of 110kW (150hp) and max torque of 360Nm. This effective performance development is down to CommonRail direct injection and a turbocharger with variable turbine geometry. As a result, the BMW travels from 0 to 100km/h in 9.9s and goes on to a top speed of 210km/h. Combined fuel consumption, depending on model, is between 4.7 and 5.0l/100km¹. CO₂ emissions are between 122 and 132g/km¹, according to model.

¹ Fuel consumption and CO₂ emissions are dependent on wheel and tyre size. For more information, please see pages 60/61.

THE BMW M550d xDRIVE. M GENES INCLUDED.

powered by 



BMW M550d xDrive. The M Performance TwinPower Turbo inline six-cylinder diesel engine combines CommonRail direct injection and unique three-stage turbocharging with variable turbine geometry. Maximum torque of a thrilling 740Nm is available at low revs and across a broad power band while output reaches a peak of 280kW (381hp). These characteristics all ensure exceptionally spontaneous dynamism and acceleration from 0-100km/h in just 4.9s. Such high performance alongside average fuel consumption of 6.3l per 100km¹ and CO₂ emissions of 166g/km¹ reveals an excellent performance/efficiency ratio. It all emphasises, once again, the innovative power of BMW.

¹Fuel consumption and CO₂ emissions are dependent on wheel and tyre size. For more information, please see pages 60/61.



Eight-speed Steptronic sport transmission with gearshift lever featuring the M logo.



Tailpipes. The tailpipes on the left and right each come with a dark chrome trapezoid surround.



Front apron with horizontal bars in the air intakes accentuating the sporty look.





THE BEST PLATFORM FOR DRIVING DYNAMICS. AN OUTSTANDING CHASSIS.

A wide range of innovative technology in the BMW 5 Series Touring ensures that you thoroughly enjoy every journey. Many features are also intelligently networked, allowing you to experience maximum driving pleasure in the utmost safety.



The intelligent **BMW xDrive all-wheel drive system** adapts perfectly to even difficult road surfaces by always providing the extra traction you need. With xDrive and Dynamic Stability Control (DSC), your car remains stable and on track. xDrive distributes drive power to the front and rear axles, performing lightning-fast adjustments to ensure optimum ground contact.

Integral Active Steering, for rear-wheel drive vehicles, combines steering rear wheels with a variable steering-transmission ratio on the front axle. At up to 60km/h, the rear wheels steer in the opposite direction to the front wheels. This makes the wheelbase feel like it is shorter and thus improves manoeuvrability and agility. From about 60km/h, the rear wheels steer in the same direction as the front wheels. The resulting impression of a longer wheelbase enhances driving stability and comfort, which is particularly welcome when fast and abrupt lane changes are needed.

Adaptive Drive combines the active chassis control systems, Dynamic Drive and Dynamic Damper Control. Sensors constantly monitor speed and steering wheel angle as well as lateral and longitudinal acceleration of the vehicle. Based on this data, the stabiliser and shock absorber settings are regulated. This results in precise steering responses, shorter braking distances and, at the same time, increased ride comfort.

Optional **Dynamic Damper Control** allows the driver to ideally match the shock absorber characteristics to the driving situation. In addition to the standard COMFORT setting, there are two other programmes. With COMFORT+, the shock absorbers give a soft ride, reducing motion of the car to a minimum, especially on bumpy roads. In SPORT/SPORT+, the shock absorbers are set to a firmer position, for a sporty ride.

The standard **Driving Experience Control switch incl. ECO PRO** in the centre console allows you to choose your desired mode at the press of a switch. In COMFORT mode, the engine and transmission remain in their standard settings. ECO PRO mode is orientated towards efficiency. And SPORT mode puts the focus on even more dynamic driving.

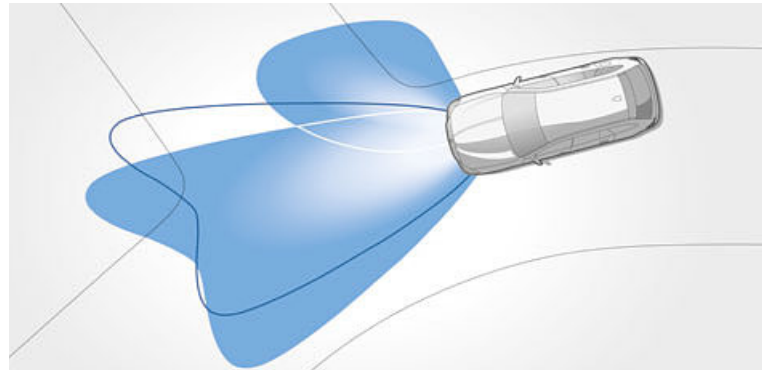
Integral rear axle. An effective suspension system needs to hold the wheels securely to the ground, providing precise control in curves and during braking manoeuvres and ensuring comfort by swallowing bumps in the road, large and small. The self-levelling integral rear axle with air suspension meets these requirements perfectly. Constructed mostly in aluminium, it guarantees optimum road-holding as well as comfortable ride behaviour and optimum acoustics.

With **Dynamic Stability Control (DSC)**, sensors constantly monitor driving status and, as necessary, modify directional stability and traction by intervening in the engine and brake management systems. This makes it easier to handle the vehicle, even in difficult road conditions, and actively enhances driving safety and therefore driving pleasure.

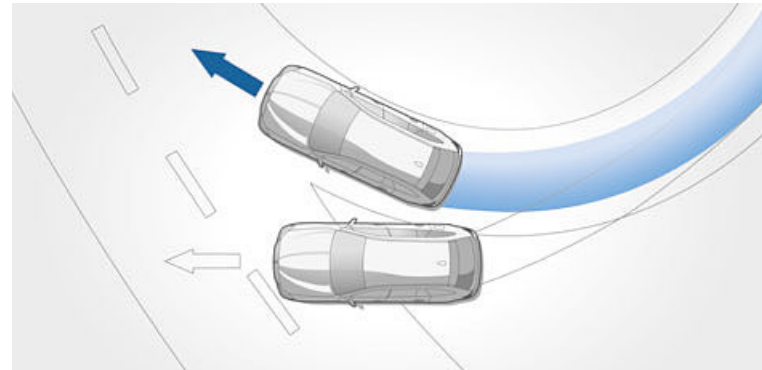
Passive safety. Thanks to targeted selection of materials, a high-strength structure and an intelligent lightweight construction concept, the body of every BMW meets the highest requirements of passive safety and, in conjunction with highly efficient restraint systems, ensures maximum possible occupant protection. They are also designed in accordance with the leading crash tests carried out by independent institutions.

MORE SAFETY. MORE DRIVING PLEASURE.

The BMW 5 Series Touring is full of cutting-edge technology that can always be relied on. Superb handling characteristics and innovative equipment come as standard, giving the driver exactly the right support for any situation. It all means that you can feel safe in all road conditions.



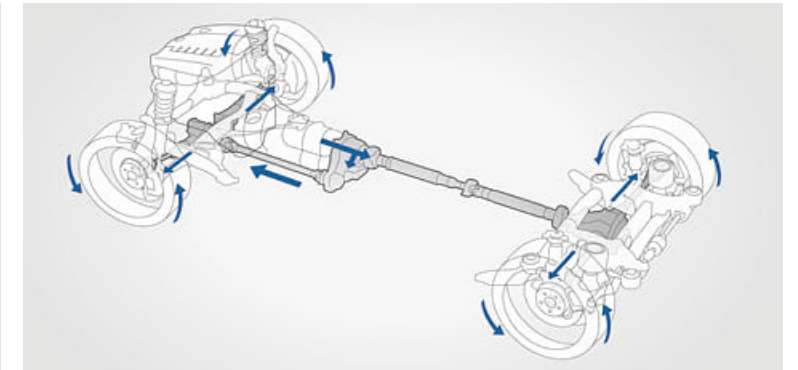
□ **Adaptive Headlights** with variable light distribution for city and motorway, BMW Selective Beam (anti-dazzle High-Beam Assistant) with automatic full and dipped beam as well as Bi-Xenon technology provide optimum illumination of the road ahead. The cornering lights are activated automatically by the steering angle or when the indicators are switched on, even when the car is stationary.



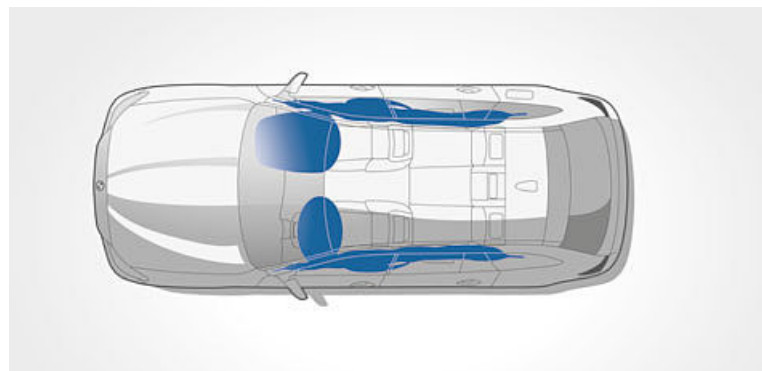
■ **Dynamic Stability Control (DSC)** features sensors that constantly monitor driving status and, as necessary, modifies directional stability and traction by intervening in the engine and brake management systems. This makes it easier to handle the vehicle, even in difficult road conditions, and actively enhances driving safety and therefore driving pleasure.



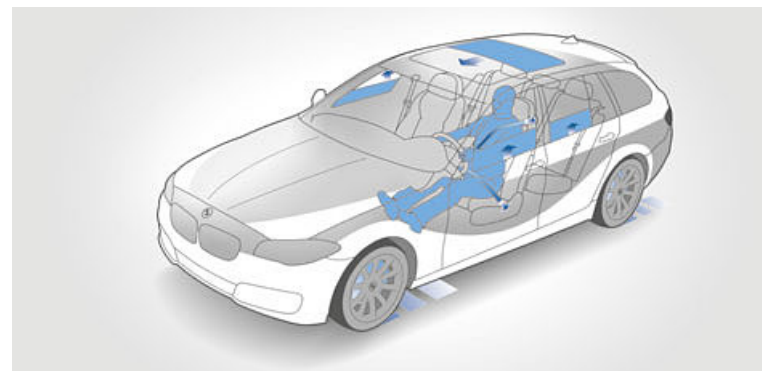
■ **BMW restraint system.** This, for the driver and front passenger, comprises three-point seat belts, belt tensioners and belt-force limiters to ensure the most effective restraining effect in a collision. To avoid incorrect use, the rear seat belt buckles are coded.



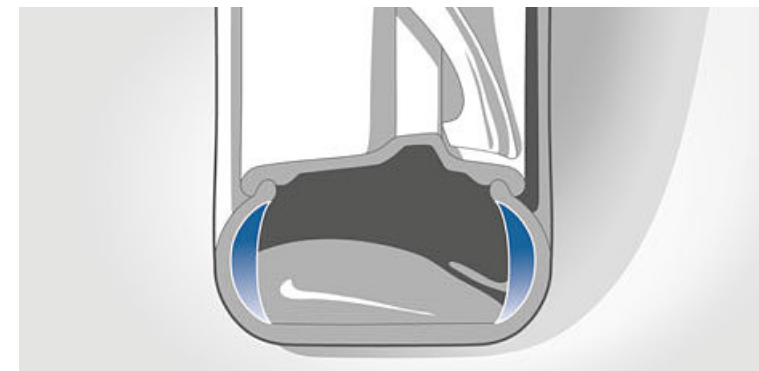
□ The intelligent **BMW all-wheel drive system xDrive** adapts perfectly to even difficult road conditions by always providing the required extra traction. With xDrive and Dynamic Stability Control (DSC), your vehicle remains stable and on track. xDrive distributes drive power flexibly between the vehicle's axles in fractions of a second for optimum road-holding. This allows xDrive to combine the advantages of all-wheel drive – traction, directional stability and driving safety – with the agility typical of a BMW.



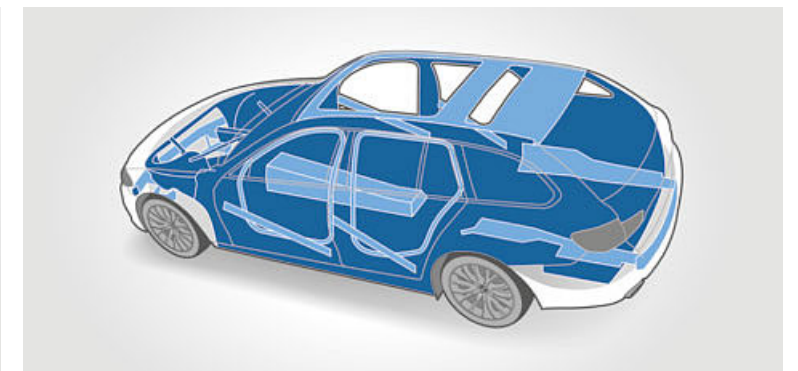
■ **Airbags** for the driver and front passenger are central, precisely coordinated safety features in your BMW. Driver and front passenger airbags, the Curtain System with head airbags as well as front seatback-integrated side airbags provide effective protection for you and your passengers in the event of a collision.



□ **Active Protection** is the preventative occupant protection system from BMW ConnectedDrive. In critical situations, for example, the safety belts are pre-tensioned, the seats are moved to an upright position and the windows are closed. Following an accident, the vehicle can also be automatically braked to a standstill. Additionally, Attention Assist monitors driving behaviour for signs of fatigue. The system also analyses steering input, picks up on irregularities and responds with a recommendation to take a break shown in the Control Display.



□ **Runflat tyres.** In the event of a puncture, reinforced sidewalls mean the tyres stay on the rim so you can get to the nearest workshop.
 ■ **Tyre Pressure Display** keeps the driver informed of pressure loss by means of a sensor. The air temperature is also monitored.



■ **Passenger cell.** Thanks to the directions of the beams and node joints and selective use of high-strength materials, this functionally designed structure provides maximum passive safety in a front, side or rear impact.

THE BMW 5 SERIES TOURING.



The cockpit with its centre console inclined towards the driver demonstrates typical BMW driver orientation. The Radio Professional and 6.5" colour display are already included as standard, as is the multifunction leather steering wheel

for excellent grip. Automatic, two-zone climate control as well as superb craftsmanship further enhance the sense of well being.



The image above shows the optional Cinnamon Brown Dakota leather and the optional fine-wood Ash Grain Brown interior trim. The BMW 5 Series Touring also features plenty of storage as standard, including two cupholders in the centre console and door compartments.



The BMW 5 Series Touring features, as standard, 17" light alloy wheels V-spoke 236. The BMW 550i is equipped with standard 18" light alloy wheels V-spoke 328.



The BMW 520d Touring in the optional exterior colour Black Sapphire metallic.

THE BMW 5 SERIES TOURING LUXURY LINE.

Luxury Line interior equipment:

- Doorsill trims, illuminated, in aluminium and with BMW logo
- Seats in Black, Veneto Beige or Oyster Dakota leather, each with exclusive stitching
- Seats in Black, Mocha or Ivory White exclusive Nappa leather, each with exclusive stitching; other upholstery available
- Sport leather multifunction steering wheel
- M leather steering wheel
- Key fob with chrome detailing
- Fine-wood trim Finition Anthracite
- Interior trim in fine-wood Ash Grain Brown with inlays and accent trim in gloss chrome; other trims available
- Seat heating for driver and front passenger
- BMW Individual extended fine-grain Merino leather

Luxury Line exterior equipment:

- BMW kidney grille with exclusively designed slats in chrome
- Front bumper with specific design elements in chrome
- 18" light alloy wheels Multi-spoke 454
- 19" light alloy wheels Multi-spoke 455; other wheels available
- 'Luxury' designation on the sides
- Side window frames and window recess covers in chrome, B-pillars, wing mirror frames and bases in high-gloss Black (shown here: optional window recess covers and window frame trim in high-gloss Shadow Line)
- Tailgate trim strip in chrome
- Exhaust tailpipe trim in chrome
- Illuminated door handles with chrome inserts
- LED foglights

BMW Individual:

The features available from BMW Individual perfectly complement the Luxury Line (see pages 40/41).



The combination of optional Comfort seats in Mocha exclusive Nappa leather with exclusive stitching and the optional Ash Grain Brown fine-wood trim gives the interior a particularly refined ambience.



■ 'Luxury' designation on the sides.



■ Sport leather multifunction steering wheel, three-spoke, with chrome trim and optional gearshift paddles.



■ 18" light alloy wheels Multi-spoke 454. 8 J x 18 with 245/45 R 18 runflat tyres.



□ 19" light alloy wheels Multi-spoke 455. 8.5 J x 19 with 245/40 R 19 runflat tyres.



THE BMW 5 SERIES TOURING EDITION SPORT.*

Edition Sport interior equipment:

- Seats in Diagonal cloth Anthracite or Veneto Beige
- Seats in Black, Veneto Beige, Cinnamon Brown or Oyster Dakota leather with exclusive stitching
- Sport/Comfort seats in Dakota leather
- High-gloss Black interior trim
- Fine-brushed aluminium interior trim, fine-wood trim Ash Grain Brown or fine-wood trim Finesline Anthracite
- Sport leather multifunction steering wheel
- M leather steering wheel

Edition Sport exterior equipment:

- 18" light alloy wheels Double-spoke 609
- 19" light alloy wheels Double-spoke 610 Bicolour; other wheels available
- BMW Individual high-gloss Shadow Line
- BMW Individual Exterior Line in satinated aluminium
- LED foglights



■ Sport leather multifunction steering wheel, three-spoke, with chrome trim.



□ Multifunctional instrument display.



■ 18" light alloy wheels Double-spoke 609. 8 J x 18 with 245/45 R 18 runflat tyres.



□ 19" light alloy wheels Double-spoke 610 in Bicolour. 8.5 J x 19 with 245/40 R 19 runflat tyres.

The combination of the optional Black Dakota leather and the optional fine-brushed aluminium interior trim accentuates the sporty appearance of the interior.
□ The interior can also be fitted with optional Sport seats or Comfort seats in Dakota leather.



The BMW 530d Touring Edition Sport in the optional exterior colour Mediterranean Blue metallic (shown here with optional roof rails).

* In some countries, the Edition Sport Pro is offered. Please consult your BMW partner for more information about this edition.

THE BMW 5 SERIES TOURING M SPORT PACKAGE.

M Sport package interior equipment:

- M doorsill finishers and M driver footrest
- Sport seats for driver and front passenger in cloth/Alcantara combination Grey Shadow Anthracite with exclusive M look; other upholstery available
- Comfort seats for driver and front passenger in exclusive Nappa leather with exclusive stitching
- M leather multifunction steering wheel
- BMW Individual headliner in Anthracite
- BMW Individual headliner in Alcantara
- Aluminium Hexagon interior trim; other trims available
- BMW Individual extended fine-grain Merino leather

M Sport package exterior equipment:

- M Aerodynamics package with front apron, side sills and rear apron with diffuser insert in Dark Shadow metallic
- LED foglights (not in conjunction with auxiliary heating)
- 18" M light alloy wheels Double-spoke 613 M
- 19" M light alloy wheels Double-spoke 351 M
- M Sport suspension (not with xDrive)
- BMW Individual high-gloss Shadow Line
- BMW Individual Exterior Line in satinated aluminium
- 'M' designation on the sides
- Wing mirror caps in body colour
- Exhaust tailpipes in dark chrome
- Exclusive paint finish in Carbon Black metallic; other paint finishes available

BMW Individual:

The features available from BMW Individual perfectly complement the M Sport package (see pages 40/41).



Athletic interior design with a sporty M leather steering wheel, Sport seats in the cloth-Alcantara combination Grey Shadow Anthracite with M piping and the Aluminium Hexagon trim.



■ A sporty sight: doorsill finishers in aluminium, front and rear, with 'M' designation.



■ 18" M light alloy wheels Double-spoke 613 M. 8 J x 18 with 245/45 R 18 tyres.



19" M light alloy wheels Double-spoke 351 M. 8.5 J x 19 with 245/40 R 19 tyres.



powered by 

BMW Individual

The expression of personality.



BMW Individual paint finish
Pyrite Brown metallic.



The BMW 5 Series Touring. Inspired by BMW Individual.

□ Driving a BMW is, in itself, a mark of character. There are those who still, however, want their vehicles to be even more individual reflections of their personality. The BMW Individual Collection and the BMW Individual Manufaktur meet these needs by opening up seemingly limitless opportunities for differentiation.

Precisely in tune with each model, the BMW Individual Collection offers a highly exclusive selection of equipment options. Fascinating paint finishes either refracting the light or with a matt effect. Leather, unique in colour and scope of application, perfected with clever contrasts and decorative stitching. Interior trims in the most exclusive fine woods, the immaculate Piano finish and the finest leather.

And yet even this can be surpassed – thanks to the BMW Individual Manufaktur. Here, there is only one goal: realising almost any customer request, even the most personal, with stylish, hand-crafted perfection.



BMW Individual fine-wood trim Sen Light Brown and
leather-covered instrument panel.



BMW Individual extended fine-grain Merino leather Platinum with
interior trim Piano finish Black and leather-covered instrument panel.



EXTERIOR COLOURS.

M SPORT PACKAGE.



■ **Non-metallic 668 Black**



□ **Metallic A72 Cashmere Silver²**



□ **Metallic B65 Jatoba²**



□ **Metallic 416 Carbon Black**



□ **Non-metallic 300 Alpine White¹**



□ **Metallic A52 Space Grey³**



□ **Metallic A90 Sophisto Grey, brilliant effect²**



□ **Metallic A96 Mineral White²**



□ **Metallic C10 Mediterranean Blue³**



□ **Metallic A89 Imperial Blue, brilliant effect²**



□ **Metallic A83 Glacier Silver³**



□ **Metallic B39 Mineral Grey³**



□ **Metallic 475 Black Sapphire²**

BMW INDIVIDUAL.



□ **BMW Individual X04 Moonstone metallic³**



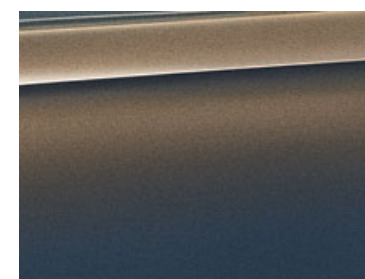
□ **BMW Individual X02 Citrine Black metallic³**



□ **BMW Individual 490 Pure metal Silver³**



□ **BMW Individual 490 Pyrite Brown metallic³**



□ **BMW Individual X08 Champagne Quartz metallic³**



□ **BMW Individual S34 Azurite Black metallic³**



□ **BMW Individual 490 Frozen Silver metallic³**



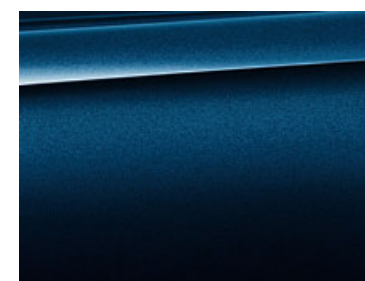
□ **BMW Individual X11 Frozen Bronze metallic³**



□ **BMW Individual 490 Brilliant White metallic³**



□ **BMW Individual 490 Frozen Grey metallic³**



□ **BMW Individual X10 Tanzanite Blue metallic³**



□ **BMW Individual 490 Frozen Brilliant White metallic³**



□ **BMW Individual 490 Frozen Cashmere Silver metallic³**

¹ Standard for M Sport package.

² Not available for M Sport package.

³ Also available for M Sport package.

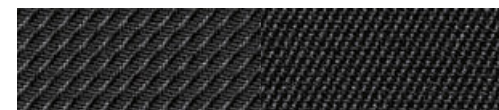
These pages show the colours and materials available for the BMW 5 Series Touring. Use them to identify your favourite colours or compare various combinations. These colour samples are meant to give a first impression of paints and materials. Experience has shown, however, that printed versions of paint, upholstery colours and interior trims cannot in all cases faithfully reproduce the appearance of the originals. We therefore recommend that you consult your BMW partner on your preferred colour choices. They will be happy to show you samples and assist with special requests.

BASE.

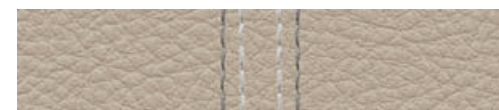
UPHOLSTERY COLOURS.



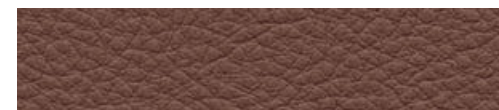
■ **Diagonal cloth** AWDF Veneto Beige



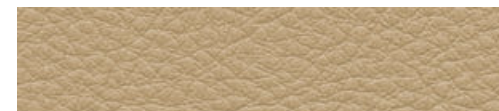
■ **Diagonal cloth** AWAT Anthracite



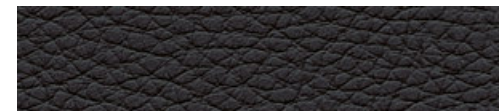
□ **Dakota leather** LCOX Oyster with exclusive stitching



□ **Dakota leather** LCEZ Cinnamon Brown, with lower part of instrument panel in Cinnamon Brown



□ **Dakota leather** LCDF Veneto Beige with Veneto Beige interior

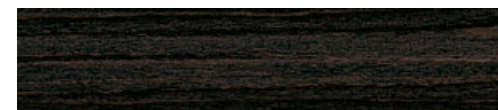


□ **Dakota leather** LCSW Black

INTERIOR TRIMS.



■ 4AT/4EH Black, high-gloss



□ 4CE Fine-wood trim Finline Anthracite



□ 4B9 Fine-brushed aluminium



□ 4BN Fine-wood trim Ash Grain Brown (standard for 550i, 550i xDrive and ActiveHybrid 5)

INTERIOR COLOURS.



Veneto Beige



Black

BMW INDIVIDUAL.

UPHOLSTERY COLOURS.



□ **BMW Individual fine-grain Merino leather** ZAC8 Platinum^{1,2} with exclusive piping



□ **BMW Individual fine-grain Merino leather** ZAKS Cashmere Beige^{1,2,3} with exclusive piping



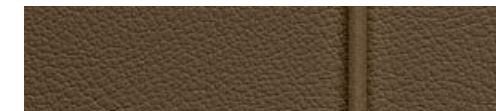
□ **BMW Individual fine-grain Merino leather** ZAP6 Champagne^{1,2} with exclusive piping



□ **BMW Individual fine-grain Merino leather** ZAP7 Silk Grey^{1,2} with exclusive piping



□ **BMW Individual fine-grain Merino leather** ZAP5 Amaro Brown^{1,2} with exclusive piping



□ **BMW Individual fine-grain Merino leather** ZAML Nutmeg^{1,2} with exclusive piping

INTERIOR TRIMS.



□ **BMW Individual interior trim** XEW Fine-wood trim Sen Light Brown²



□ **BMW Individual interior trim** XE5 Fine-wood trim Plane Auburn Dark²



□ **BMW Individual interior trim** XE7 Piano finish Black²

HEADLINER.



□ **BMW Individual headliner** XD5 Alcantara Platinum⁴



□ **BMW Individual headliner** XD5 Alcantara Champagne⁴



□ **BMW Individual headliner** XD5 Alcantara Silk Grey⁴



□ **BMW Individual headliner** XD5 Alcantara Amaro Brown⁴



□ **BMW Individual headliner** 776 Alcantara Anthracite⁴



□ **BMW Individual headliner** 775 Anthracite⁴

Please note that, over time, even correct use can lead to unrecoverable upholstery damage. This can be caused, in particular, by non-colourfast clothing.

¹ BMW Individual extended fine-grain Merino leather equipment includes front and rear seats including headrests, rear of seat backrests, inserts in door panels, centre console including armrest and the lower part of the instrument panel.

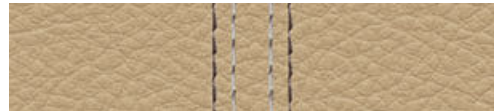
² Also available for Luxury Line and M Sport package.

³ Only available in conjunction with Black interior colour (ZAKS).

⁴ Also available for M Sport package.

LUXURY LINE.

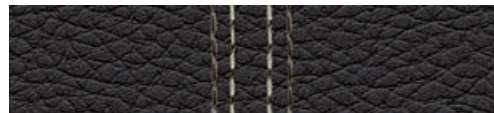
UPHOLSTERY COLOURS.



■ **Dakota leather** LCLY Veneto Beige with exclusive stitching and Veneto Beige interior



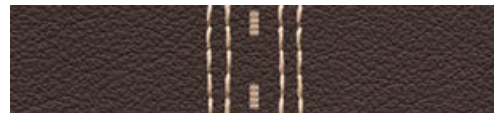
■ **Dakota leather** LCOX Oyster with exclusive stitching



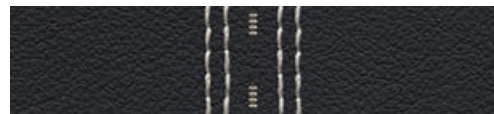
■ **Dakota leather** LCLZ Black with exclusive stitching



□ **Exclusive Nappa leather** LZET Ivory White with exclusive stitching, additional interior features in Oyster



□ **Exclusive Nappa leather** LZMW Mocha with exclusive stitching, lower part of instrument panel in Mocha



□ **Exclusive Nappa leather** LZLZ Black with exclusive stitching



■ **Dakota leather** LCSW Black¹



■ **Dakota leather** LCEZ Cinnamon Brown, with lower part of instrument panel in Cinnamon Brown

INTERIOR TRIMS.



■ 4AT/4EH Black, high-gloss



■ 4CE Fine-wood trim Finesline Anthracite



■ 4B9 Fine-brushed aluminium



■ 4BN Fine-wood trim Ash Grain Brown (standard for 550i)



□ 4CT Fine-wood trim Ash Grain Brown with inlay and accent trim in gloss chrome

INTERIOR COLOURS.



Veneto Beige



Black

M SPORT PACKAGE.

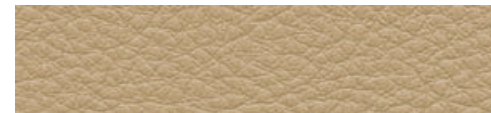
UPHOLSTERY COLOURS.



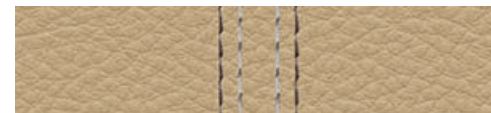
■ **Cloth-Alcantara combination** AZAT Grey Shadow Anthracite



□ **Dakota leather** LCEZ Cinnamon Brown, with lower part of instrument panel in Cinnamon Brown



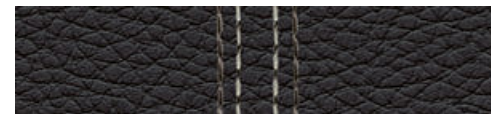
□ **Dakota leather** LCDF Veneto Beige with Veneto Beige interior



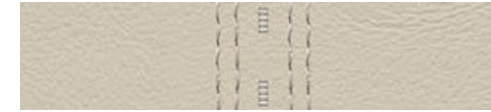
□ **Dakota leather** LCLY Veneto Beige with exclusive stitching and Veneto Beige interior



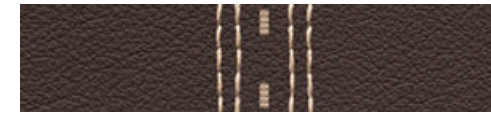
□ **Dakota leather** LCOX Oyster with exclusive stitching



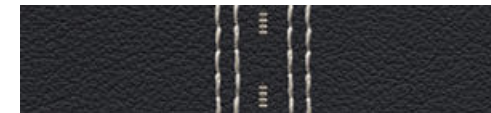
□ **Dakota leather** LCLZ Black with exclusive stitching



□ **Exclusive Nappa leather** LZET Ivory White with exclusive stitching, additional interior features in Oyster

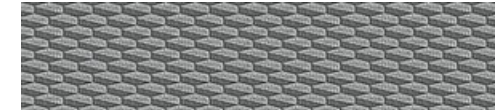


□ **Exclusive Nappa leather** LZMW Mocha with exclusive stitching, lower part of instrument panel in Mocha



□ **Exclusive Nappa leather** LZLZ Black with exclusive stitching

INTERIOR TRIMS.



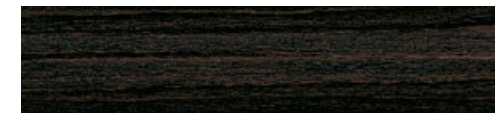
■ 4MR Interior trim Aluminium Hexagon



■ 4AT/4EH Black, high-gloss



■ 4B9 Fine-brushed aluminium



□ 4CE Fine-wood trim Finesline Anthracite (standard for 550i)



□ 4BN Fine-wood trim Ash Grain Brown (standard for 550i)



□ 4CT Fine-wood trim Ash Grain Brown, with inlay, accent trim in gloss chrome

INTERIOR COLOURS.



Veneto Beige



Black

¹ Also available for M Sport Package..

Standard / Optional equipment.



□ **Adaptive LED Headlights** with BMW Selective Beam (anti-dazzle High-Beam Assistant), cornering lights and adaptive lights. Their bright colour approximates daylight for optimum illumination of the road, improved visibility and reduced tiredness when driving at night. The four LED light rings present an unmistakable look.

■ **Xenon Headlights** for high and low beam, including headlight washing system and accent lights, automatic headlight range control as well as parking, standing and daytime-running lights using four LED light rings.



■ The design of the **rear lights** is instantly recognisable, even at long distances, thanks to distinctive, finely drawn horizontal light strips in LED technology.



□ **Panorama glass roof** with large opening and viewing area plus wind deflector. The forward glass panel can be raised electrically with fingertip control and has a sliding function, electrically adjustable floating headliner (sun screen) as well as a comfort opening/closing function with trap release.



□ **LED foglights** harmoniously complement the colour of the LED or Xenon Headlights. The bright white light also increase safety when visibility is poor.¹



■ **Wing mirrors**, electrically adjustable; indicators with LED tech.
□ **Interior and driver-side exterior mirrors** with automatic anti-dazzle function, including fold-in function for the exterior mirrors and automatic parking function for the front passenger exterior mirror.



■ **The rain sensor** incl. automatic headlight activation ensures optimum visibility in the rain and the onset of darkness. The interval speed of the windscreen wipers is regulated according to rain intensity and, when needed, the low beam comes on automatically.
□ **BMW Selective Beam** (anti-dazzle High-Beam Assistant) continuously regulates the main beam according to traffic and provides optimal road illumination (incl. with Adaptive LED Headlights).



□ **BMW Individual high-gloss Shadow Line** with numerous details in high-gloss black: front and rear side window trim, window recess covers front and rear, window guides on the rear doors and wing mirror frames.



□ **BMW Individual Exterior Line in satinated aluminium** features window side frames and window recess covers in satinated aluminium. Additionally, many details are finished in high-gloss black: wing mirror frames, base and triangle, B-pillar trims and rear-door window guides.



□ **Roof rails** in satinated aluminium perfectly complement the vehicle design. Can be used as the base for the multifunction BMW roof rack system for effortlessly and safely carrying luggage, bicycles, surfboards, etc.



■ **The headlight washing system** ensures optimal illumination in all weathers. Headlights are automatically cleaned in parallel with the windscreen when the windscreen wash function is activated.



□ **xDrive**. The intelligent all-wheel system distributes power continuously and variably to the front and rear wheels for increased traction, directional stability and driving safety in every situation.



□ **Trailer tow hitch**. Approved for high trailer loads of up to 2,000kg and featuring trailer stability control. The electric swivelling ball head retracts out of sight beneath the rear apron.



■ **Exhaust pipes**, featuring single tailpipes, left and right, for 535i, 535i xDrive, 535d and 535d xDrive. A twin tailpipe, left, for 520i, 528i, 528i xDrive, 518d, 520d, 520d xDrive, 525d, 525d xDrive, 530d and 530d xDrive. Trapezoid-shape tailpipes, left and right, for 550i and M550d xDrive.

¹ Not available for the BMW M550d xDrive.

Standard / Optional equipment.



□ 17" light alloy wheels **Multi-spoke 456**, 8 J x 17 with 225/55 R 17 runflat tyres.



■ 17" light alloy wheels **V-spoke 236**, 8 J x 17 with 225/55 R 17 tyres.



□ 17" light alloy wheels **Streamline 363**, 8 J x 17 with 225/55 R 17 tyres.



□ 18" light alloy wheels **Turbine Styling 452** in Bicolour Ferric Grey, 8 J x 18 with 245/45 R 18 tyres.



□ 18" light alloy wheels **Double-spoke 609**, 8 J x 18 with 245/45 R 18 runflat tyres.



□ 18" light alloy wheels **V-spoke 328**, 8 J x 18 with 245/45 R 18 runflat tyres (standard for 550i).



□ 18" light alloy wheels **Streamline 364**, 8 J x 18 with 245/45 R 18 runflat tyres.



□ 19" light alloy wheels **Turbine Styling 453** in Bicolour Ferric Grey, 8.5 J x 19 with 245/40 R 19 runflat tyres.



□ 19" light alloy wheels **Double-spoke 610** in Bicolour, 8.5 J x 19 with 245/40 R 19 tyres.



□ 19" light alloy wheels **V-spoke 366**, 8.5 J x 19 with 245/40 R 19 runflat tyres.

Luxury Line.



■ 18" light alloy wheels **Multi-spoke 454** in Bicolour, 8 J x 18 with 245/45 R 18 runflat tyres.



□ 19" light alloy wheels **Multi-spoke 455** in Bicolour, 8.5 J x 19 with 245/40 R 19 runflat tyres.

M Sport package.



□ 19" M light alloy wheels **Double-spoke 351 M**, 8.5 J x 19 with 245/40 R 19 runflat tyres (standard for M550d xDrive).



■ 18" M light alloy wheels **Double-spoke 613 M**, 8 J x 18 with 245/45 R 18 runflat tyres.

BMW Individual.



□ **BMW Individual 19" light alloy wheels V-spoke 349 I**, 8.5 J x 19 with 245/40 R 19 runflat tyres.

Standard / Optional equipment.



■ **Leather steering wheel**, multifunction, three-spoke.

□ **Steering wheel heating** warms up the wheel rim at the touch of a button. A particularly welcome touch in winter.



□ **M Leather steering wheel** including multifunction buttons, steering wheel rim in leather 'Walknappa' Black with contoured thumb rests.^{1,3}



□ **Sport leather multifunction steering wheel**, three-spoke and with chrome inserts.¹



□ **BMW Individual leather steering wheel** with Piano finish Black wood ring inlay.²



■ **Six-speed manual transmission** enables a very sporty driving style with smooth, perfectly defined ratios for enjoyably precise, short-throw shifting. The closely spaced gearing – according to driving style – allows even more individual use of the dynamic engine characteristics.



□ **Eight-speed Steptronic transmission.** This provides significantly higher gearshifting and driving comfort thanks to closely defined gear ratios and minimised changes in engine speed at each transition. This also leads to a perceptible increase in dynamism and reduced fuel consumption. Additionally, a gear lever allows manual shifts (standard for 550i, 535d, 530d and all xDrive models).



□ **Eight-speed Steptronic sport transmission** with electronic gear selection and Adaptive Transmission Management for dynamic and, at the same, efficient driving. Gearshifts can also be made manually via a dynamically designed selector lever or gearshift paddles on the steering wheel (standard for M550d xDrive).



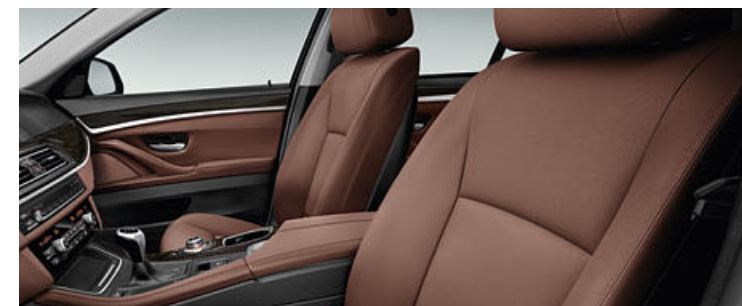
■ The standard **Driving Experience Control switch** in the centre console allows you to select your desired mode at the touch of a button. In COMFORT mode, the engine and transmission remain in their standard settings. ECO PRO mode is orientated towards efficiency. And SPORT mode puts the focus on even more dynamic driving.



¹ Gearshift paddles only in conjunction with Steptronic sport or Steptronic transmission with gearshift paddles.

² Wood ring inlay is similar to the BMW Individual interior trim version.

³ Standard for BMW M550d xDrive.



■ **Standard seats** for driver and front passenger, with electric adjustment for seat height and backrest angle. Driver's seat angle is also electrically adaptable. Fore and aft seat positioning and headrest heights are manually adjustable.

■ **ISOFIX** attachment points on the two outer rear seats enable secure fitting of child seats with integrated plug-in connectors and top fastening points.

□ **Seat heating** for driver and front passenger. With three heating levels for seat surfaces and backrests.



□ **Comfort seats** for driver and front passenger incl. active headrests and electrical adjustment. The upper backrests, backrest widths, thigh supports and headrest heights can all be adjusted. Lumbar support and memory function for driver and front passenger also included.

□ **Active seats** for driver and front passenger ensure relaxed travel even on long journeys thanks to alternating up and down movement of the seat surface.

□ **Active front seat ventilation** for a pleasantly cool seat temperature and noticeably more comfort.



□ **Sport seats** for driver and front passenger offer optimum hold. Electrically operated seat heights, backrests and seat angles. Thigh supports are manually adjustable.³



□ **Electric seat adjustment** with memory function allows desired configurations of the seat, steering wheel position and wing mirrors to be saved. Settings can be restored at any time. Memory function only for driver's seat. (Standard for 550i and M550d xDrive).

□ **Lumbar support** for driver and front passenger, electrically adjustable for height and depth for an ergonomically perfect seating position.



□ **Ambient Lighting** provides illumination in areas including the front centre console, all door pockets and door panels, door openers, door exit areas and the exterior door handles. Choose between a brighter white or a muted orange light (standard for 550i and M550d xDrive).

■ **Interior lighting** includes two make-up lights and two front footwell lights, four door exit lights, rear reading lights as well as illumination in the luggage compartment and glove box.

Standard / Optional equipment.



□ **Driving Assistant** combines the Lane Departure Warning and Approach Warning systems. The Approach and Pedestrian Warning with City Brake Activation issues a warning between 10 and 60km/h if there is a risk of collision with vehicles or pedestrians and brakes the vehicle in the event of an emergency. From speeds of approx. 70km/h, Lane Departure Warning alerts the driver to an unintentional lane change via slight vibration in the steering wheel.



□ **Driving Assistant Plus**, along with Approach Control Warning and Lane Departure Warning, also features Active Cruise Control with the Stop&Go function and Traffic Jam Assist¹. With these features, Driving Assistant Plus increases safety and comfort in motorway driving. A Steptronic transmission and the Navigation System Professional or Business are required for Driving Assistant Plus and Traffic Jam Assist.



□ **Active Cruise Control with Stop&Go function** incl. Approach Control Warning with braking function. This system maintains a pre-selected distance from the vehicle ahead, automatically adjusts the speed through to a standstill and accelerates back to the chosen speed.



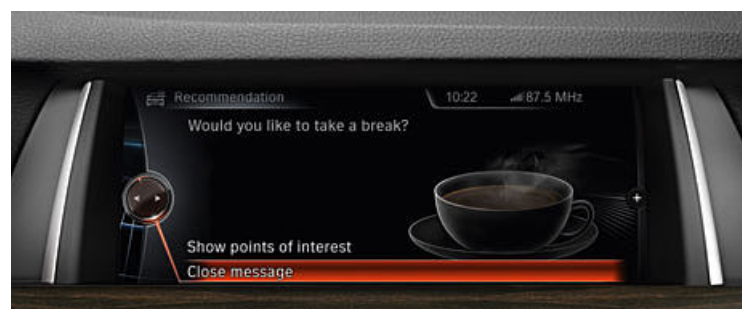
□ **Lane Change Warning** detects, at speeds from 20km/h, a vehicle in the driver's blind spot or approaching in the overtaking lane and alerts the driver with a warning symbol in the wing mirror. If the driver still intends to change lane, steering wheel vibration and a flashing symbol warns of the potentially critical situation.



□ **Speed Limit Info** including no-overtaking indicator detects speed limits and information on overtaking restrictions and shows them in the Info Display in the instrument cluster. The Navigation system Business or Professional is required for use.



■ **ECO PRO mode** reduces fuel consumption by up to 20 per cent depending on individual driving style. An additional five per cent in savings can be achieved with the Coasting function, Route-Ahead Assistant and ECO PRO Route, in conjunction with the Steptronic transmission and Navigation System Professional.



□ **Active Protection** comprises a number of vehicle safety features. In critical situations, for example, the safety belts are pre-tensioned, the seats are moved to an upright position and the windows are closed. Following an accident, the vehicle can also be automatically braked to a standstill. Additionally, Attention Assist monitors the driver's steering input and responds with appropriate recommendations in the Control Display.



□ **BMW Head-Up Display³, full-colour**, projects all relevant driving information into the driver's line of sight to enhance concentration and focus on the road ahead. Data including the current speed, navigation directions, Speed Limit Info including no-overtaking indicator and telephone and entertainment lists are displayed.



■ **Instrument cluster** features five analogue dials – speed, rpm, tank capacity, oil temperature and fuel consumption – as well as an Info Display which, for example, shows the exterior temperature and on-board computer functions.

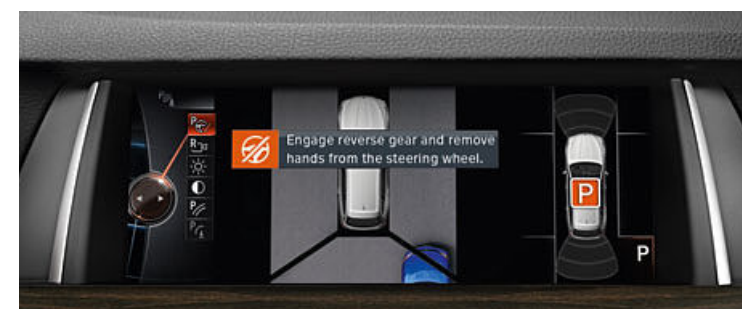
□ **Instrument cluster with extended functionality** (shown here) including, among other features, a high-resolution 9.2" Info Display for showing Check Control functions, navigation instructions and other information as well as information on music tracks being played. When ECO PRO mode is active, ECO PRO tips use graphics to encourage a more efficient driving style.



□ **Multifunctional Instrument Display** with Black Panel technology and a 10.2" diagonal screen offers an impressive visual representation of the driving experience. Three different modes and their specific characteristics, adapted with colour and graphics, can be displayed in the instrument cluster. The modes are: COMFORT, ECO PRO and SPORT.



□ **BMW Night Vision with Dynamic Light Spot** transfers images of people and animals detected by a thermal imaging camera directly to the Control display. Additionally, the system can locate people and larger animals even at long distances and specifically illuminate them in the dark.



□ **Park Assist** makes parallel parking easier. With this new-generation system, suitable parking places are shown in the Control Display and can be selected. The driver then activates the indicators and holds down the PDC button. The system then provides parking support, involving gear selection and control of the steering, accelerator² and brakes².



□ **Park Distance Control (PDC)**, front and rear, helps with parking and manoeuvring in confined spaces. When the vehicle approaches an obstacle, there is a warning signal and a visual indication in the Control Display.

□ **Rear View camera** shows the area to the rear of the vehicle on the Control Display. Interactive guidelines and obstacle indicators provide extra support.

□ **Surround View** comprises the Rear View camera with Top View and Side View to offer a panoramic 270-degree perspective. The system provides support in confined situations and when negotiating areas where visibility is limited.

¹ Traffic Jam Assist not available for xDrive models.

² Available for models with Steptronic transmission; Park Assist not available for models with xDrive.

³ Visibility of the display is limited by polarised sunglasses.

BMW Head-Up Display functionality shown is dependent on equipment.

Standard / Optional equipment.



□ **Ceramic application for control functions** include the gear lever, the front Controller surround as well as volume and temperature controls. For a high quality and unique impression.
 ■ **iDrive Controller**, within easy reach in the centre console, allows intuitive operation of all integrated iDrive functions via the Control Display.



□ **Automatic air-conditioning with four-zone regulation**, equipped as automatic air-conditioning with two-zone regulation but with additional air vents in the B-pillars as well as a comfort vent in the centre of the instrument panel for directional or draft-free ventilation. Additionally, the outer rear seats feature individual temperature control complete with display (standard for 550i and M550d xDrive).

□ **iDrive Touch Controller**, featured with the Navigation System Professional, enables intuitive and convenient operation of the iDrive system. Using the Controller-integrated touchpad, for instance, destination addresses for the navigation system can be entered using your own handwriting while the input is conveniently shown in the Control Display.



■ **Automatic air-conditioning with two-zone regulation** allows independent, automatic temperature control for the driver and front passenger.¹ Includes rear-seat vents, microfilter, fogging sensor, Max-Cool button and park ventilation function.

□ **Navigation System Business** with iDrive Controller and fixed 6.5" LCD colour monitor, including Radio Professional with CD drive.

□ **Navigation System Professional²** including split-screen function, 10.2" LCD colour display, Radio Professional with DVD drive, three-dimensional map display and 20GB of memory. Operation is intuitive thanks to the iDrive Touch Controller.



□ **Bang & Olufsen high-end Surround Sound system** includes 16 loudspeakers with 1,200 watts of music power. Dirac Dimensions signal processing also helps ensure outstanding acoustics. Two sound options are featured, Studio and Expanded, along with special lighting effects for the individual speaker frames.



■ **Radio BMW Professional** features a 6.5" colour monitor, iDrive Controller with one-touch buttons, CD drive and MP3 decoder.
 □ **DAB tuner** (Digital Audio Broadcasting) offers all major stations including a wide variety of special interest broadcasts across the entire transmission range and in perfect sound quality thanks to digital reception. DAB+ enabled for even better sound quality.



□ **Harman Kardon Surround Sound system** with a powerful 600-watt digital amplifier, vehicle-specific equalising, 16 loudspeakers incl. centre speaker, DIRAC signal processing and surround mode creates an aural experience of the highest intensity. An aluminium signature in each of the mirror triangles on the speaker covers is also featured.



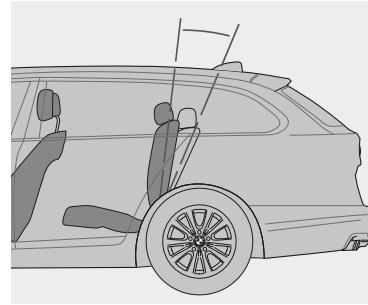
□ **Rear Entertainment Professional** with two separate 9.2" colour displays (adjustable for angle) and a DVD drive. Allows navigation and use of the internet while the car is being driven (dependent on mobile phone contract). Also features remote control and connections for MP3 players, games consoles and headphones (also wireless).

¹ Separate air volume control is also as standard for the 535i, 535i xDrive, 535d and 535d xDrive.
² As a function of BMW ConnectedDrive, the system automatically updates map material up to four times a year, without licensing fees, for three years in selected European countries.

Standard / Optional equipment.



□ **Ski and snowboard bag** for clean and secure transport of up to four pairs of skis or three snowboards with up to four people on board. The bag is easy to remove and can also be used outside the vehicle. When not in use, it can be stored in the supplied bag.



□ **Luggage compartment package** features a rear seat backrest, with an 11-degree range of adjustment (seven stages), that expands luggage capacity by up to 30 litres. Also includes two lashing rails with a pair of sliding lashing eyelets, an elastic strap, a multi-function hook and a luggage net.



■ **Tailgate window**, independently opening: for quick and easy access to the luggage compartment, the rear window can be opened separately by remote control. When the window opens, the load cover retracts; when closed manually, the cover slides back into place.



□ **Sunblinds** for the rear side windows can be manually raised and lowered. They protect against intense sunlight while also providing effective privacy.



□ **Comfort Access** allows keyless access to the vehicle via the driver's door, front passenger door and the tailgate. Also includes courtesy lighting of the front and rear exterior door handles as well as contactless opening of the tailgate which involves a small movement of the foot beneath the rear bumper.



■ **Luggage compartment dividing net** helps to prevent objects from falling into the passenger compartment under heavy braking.



■ **Through-loading system** includes a 40:20:40-split rear seat backrest for more transportation possibilities and additional individual seating and luggage compartment configurations, a centre armrest with an integrated storage compartment and two cupholders.



□ **BMW Welt.** Vehicle collection at the BMW Welt is one of the most special moments for any driver. Turn that moment into an unforgettable day with a programme that perfectly matches your requirements. To find out more, please go to: www.bmw-welt.com



□ **BMW Service Inclusive.** When it comes to service, your BMW partner is ready with an intelligent solution. With BMW Service Inclusive, there are no extra costs for regular maintenance within an agreed term or mileage limit. For more information, visit: www.bmw.com/ServiceInclusive

Original BMW Accessories*.



20" light alloy wheels V-spoke 356 Liquid Black; BMW roof box 460 in white.



Travel & Comfort System folding table, offers rear passengers a practical surface and is adjustable for both height and incline.



Ski and snowboard bag Luxury, for clean transport of up to four pairs of skis or three snowboards. Attaches securely to the lashing eyes in the boot.



Digital wireless headphones in exclusive BMW design and specially made for the rear entertainment system.



Snap-in adapter for using the telephone or listening to music.



Travel & Comfort system coat hanger for crease-free transport of clothes. Can also be detached for use outside the vehicle.



BMW holder for Apple iPad with base support that attaches to the front seat headrest bars.

Driving a BMW is always a special experience, but it can be made even more so with Original BMW Accessories thanks to their combination of unique ideas, supreme functionality and clever design. Discover a wide range of innovative features for the exterior and interior as well as for communication and information. There are also many solutions for transportation and the luggage compartment. Your BMW Service partner will be pleased to advise on the complete range of Original BMW Accessories and will have a special catalogue waiting for you. For more information, please visit:

www.bmw.com/accessories

* May not be available in all countries. Please consult your BMW partner.

		520i	528i 528i xDrive ³	535i 535i xDrive ³	550i ³	518d	520d 520d xDrive ³	525d 525d xDrive ³	530d ³ 530d xDrive ³	535d ³ 535d xDrive ³	M550d xDrive ³
--	--	------	----------------------------------	----------------------------------	-------------------	------	----------------------------------	----------------------------------	---	---	---------------------------

Weight											
Unladen EU ¹	kg	1785 [1805]	1790 [1810]	1845 [1860]	[2000]	1795 [1805]	1800 [1810]	1825 [1835]	[1895]	[1925]	-
Unladen EU (xDrive) ¹	kg	-	[1890]	[1940]	-	-	[1915]	[1945]	[1995]	[2025]	[2065]
Max. permitted weight	kg	2350 [2370]	2355 [2375]	2420 [2435]	[2555]	2370 [2380]	2375 [2385]	2400 [2410]	[2470]	[2500]	-
Max. permitted weight (xDrive)	kg	-	[2455]	[2505]	-	-	[2480]	[2480]	[2530]	[2550]	[2570]
Permitted load	kg	640	640	650	630	650	650	650	650	650	-
Permitted load (xDrive)	kg	-	640	640	-	-	640	610	610	600	580
Permitted trailer load, unbraked ²	kg	750	750	750	750	750	750	750	750	750	-
Permitted trailer load, unbraked (xDrive) ²	kg	-	750	750	-	-	750	750	750	750	750
Permitted trailer load, braked, max. 12% gradient/max. 8% gradient ²	kg	1900/1900 [2000/2000]	2000/2000	2000/2000	2000/2000	2000/2000	1800/1800 [2000/2000]	2000/2000	[2000/2000]	[2000/2000]	-
Permitted trailer load, braked, max. 12% gradient/ max. 8% gradient (xDrive) ²	kg	-	[2000/2000]	[2000/2000]	-	-	[2000/2000]	[2000/2000]	[2000/2000]	[2000/2000]	[2000/2000]

Engine^{4,5}											
Cylinders/valves		4/4	4/4	6/4	8/4	4/4	4/4	4/4	6/4	6/4	6/4
Capacity	cc	1997	1997	2979	4395	1995	1995	1995	2993	2993	2993
Max. output/engine speed	kW (hp)/rpm	135 (184)/5000	180 (245)/5000	225 (306)/5800	330 (450)/5500	110 (150)/4000	140 (190)/4000	160 (218)/4400	190 (258)/4000	230 (313)/4400	280 (381)/4000
Max. torque/engine speed	Nm/rpm	270/1250-4500	350/1250-4800	400/1200-5000	650/2000-4500	360/1750-2500	400/1750-2500	450/1500-2500	560/1500-3000	630/1500-2500	740/2000-3000

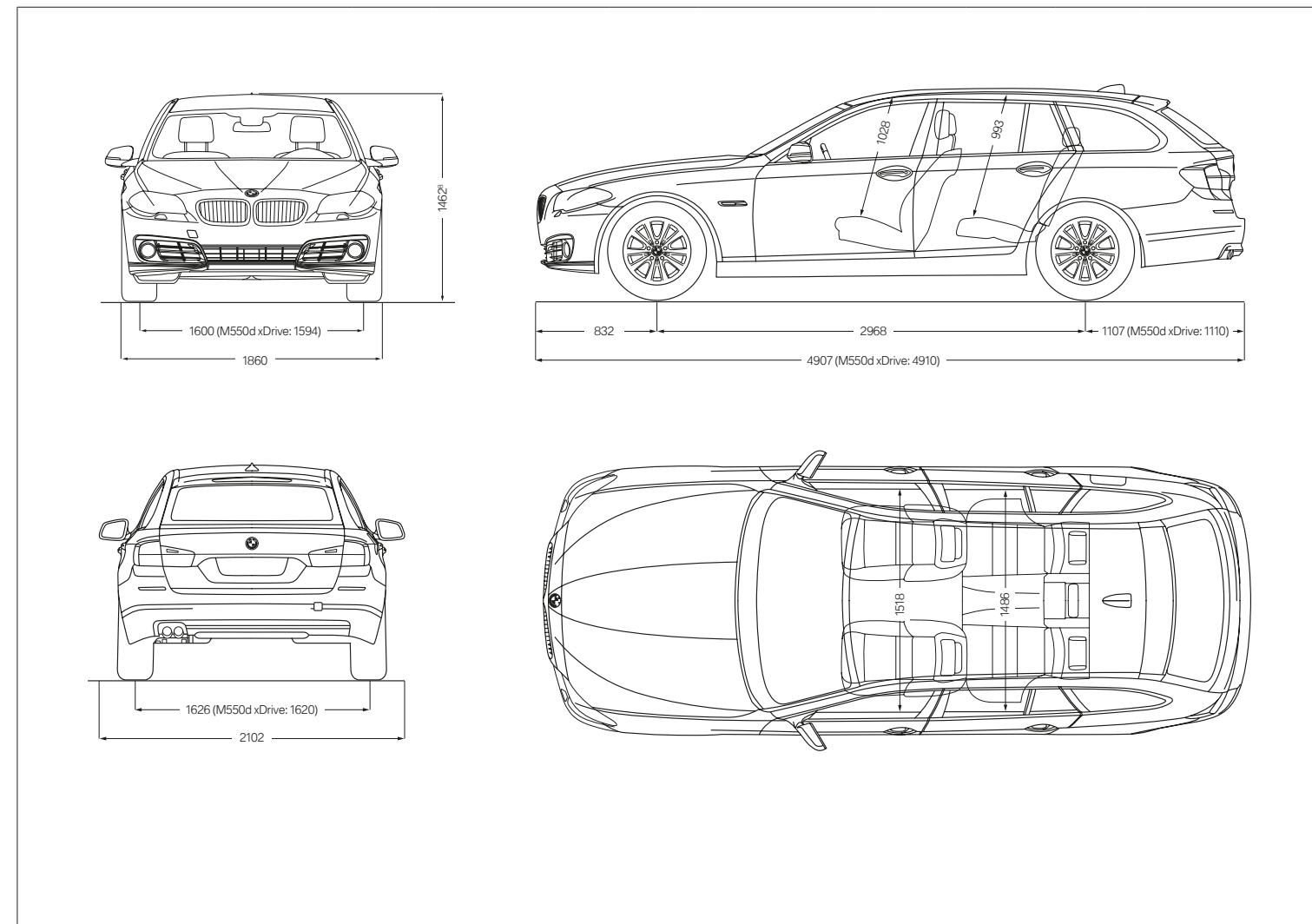
Power transmission											
Drive configuration		Rear-wheel	Rear-wheel/all-wheel	Rear-wheel/all-wheel	Rear-wheel	Rear-wheel	Rear-wheel/all-wheel	Rear-wheel/all-wheel	Rear-wheel/all-wheel	Rear-wheel/all-wheel	All-wheel
Standard transmissions		Six-speed manual	Six-speed manual	Six-speed manual	Eight-speed Steptronic	Six-speed manual	Six-speed manual	Six-speed manual	Eight-speed Steptronic	Eight-speed Steptronic	-
Standard transmission (xDrive)		-	Eight-speed Steptronic	Eight-speed Steptronic	-	-	Eight-speed Steptronic	Eight-speed Steptronic	Eight-speed Steptronic	Eight-speed Steptronic	Eight-speed Steptronic

Performance											
Top speed	km/h	226 [225]	248 [247]	250 ⁷ [250] ⁷	[250] ⁷	210 [209]	229 [226]	240 [237]	[250] ⁷	[250] ⁷	-
Top speed (xDrive)	km/h	-	[244]	[250] ⁷	-	-	[220]	[231]	[248]	[250] ⁷	[250] ⁷
Acceleration 0-100km/h	s	8.3 [8.3]	6.4 [6.5]	5.8 [5.8]	[4.7]	9.9 [9.8]	8.1 [8.0]	7.2 [7.1]	[5.9]	[5.4]	-
Acceleration 0-100km/h (xDrive)	s	-	[6.6]	[5.7]	-	-	[8.2]	[7.3]	[5.9]	[5.3]	[4.9]

Fuel consumption^{4,5}											
Urban	l/100km	8.9-9.5 [8.6-9.1]	9.3-9.9 [8.4-9.0]	11.2-11.8 [10.3-10.9]	[12.3-12.7]	5.6-5.9 [5.2-5.7]	5.5-5.9 [5.2-5.7]	6.2-6.6 [5.9-6.3]	6.2-6.7	[6.5-7.0]	-
Urban (xDrive)	l/100km	-	[8.9-9.5]	[11.1-11.7]	-	-	[5.6-6.0]	[6.2-6.7]	[6.7-7.1]	[7.1-7.6]	[7.7]
Extra urban	l/100km	5.5-5.8 [5.0-5.3]	5.6-5.9 [5.2-5.6]	6.3-6.6 [5.8-6.2]	[6.9-7.1]	4.1-4.5 [4.1-4.4]	4.1-4.5 [4.1-4.4]	4.6-4.9 [4.4-4.7]	4.7-5.1	[4.9-5.2]	-
Extra urban (xDrive)	l/100km	-	[5.5-5.9]	[6.3-6.6]	-	-	[4.4-4.7]	[4.9-5.3]	[5.1-5.4]	[5.2-5.5]	[5.5]
Combined	l/100km	6.7-7.2 [6.3-6.7]	7.0-7.4 [6.4-6.8]	8.1-8.5 [7.5-7.9]	[8.8-9.1]	4.7-5.0 [4.5-4.9]	4.6-5.0 [4.5-4.9]	5.2-5.6 [4.9-5.3]	[5.3-5.7]	[5.5-5.9]	-
Combined (xDrive)	l/100km	-	[6.7-7.2]	[8.1-8.5]	-	-	[4.8-5.2]	[5.4-5.8]	[5.7-6.0]	[5.9-6.2]	[6.3]
Combined CO ₂ emissions	g/km	157-167 [147-157]	162-172 [149-159]	188-198 [174-184]	[206-213]	127-132 [118-128]	122-132 [118-128]	136-146 [129-139]	[139-149]	[144-154]	-
Combined CO ₂ emissions (xDrive)	g/km	-	[157-167]	[188-198]	-	-	[127-137]	[142-152]	[149-159]	[154-164]	[166]
Tank capacity, approx.	l	70	70	70	70	70	70	70	70	70	70

		520i	528i 528i xDrive ³	535i 535i xDrive ³	550i ³	518d	520d 520d xDrive ³	525d 525d xDrive ³	530d ³ 530d xDrive ³	535d ³ 535d xDrive ³	M550d xDrive ³
--	--	------	----------------------------------	----------------------------------	-------------------	------	----------------------------------	----------------------------------	---	---	---------------------------

Wheels											
Tyre dimensions		225/55 R 17 W	225/55 R 17 Y	225/55 R 17 Y	245/45 R 18 Y	225/55 R 17 W	225/55 R 17 W	225/55 R 17 W	225/55 R 17 Y	225/55 R 17 Y	245/40 R 19 Y
Wheel dimensions		8 J x 17	8 J x 17	8 J x 17	8 J x 18	8 J x 17	8 J x 17	8 J x 17	8 J x 17	8 J x 17	8.5 J x 19
Material		Light alloy	Light alloy	Light alloy	Light alloy	Light alloy	Light alloy	Light alloy	Light alloy	Light alloy	Light alloy



All dimensions in millimetres. Luggage compartment volume 560 to 1,670 litres (in conjunction with optional luggage compartment package, 590 to 1,670 litres).

¹ The figure quoted includes a 90% tank filling, 68kg for the driver and 7kg for luggage. Unladen weight applies to vehicles with standard equipment. Optional equipment may increase this figure.

² The overall weight of the trailer may not exceed the maximum permissible trailer load, taking into account the maximum permissible towbar download.

³ Standard with eight-speed Steptronic transmission (M550d xDrive with eight-speed Steptronic Sport transmission).

⁴ BMW recommends the use of RON 95 super unleaded petrol. Unleaded RON 91 and higher with a maximum ethanol content of 10% (E10) may also be used. Output and consumption figures apply to RON 98 fuel. The BMW M550d xDrive is designed for sulphur-free diesel fuel (DIN EN 590).

⁵ All engines comply with the EU6 emissions standard. Fuel consumption is determined in accordance with the ECE driving cycle made up of approximately one-third urban traffic and two-thirds extra-urban driving (based on the distance covered). CO₂ emissions are measured in addition to fuel consumption. Optional equipment may increase these figures. Fuel consumption and CO₂ emissions figures depend on the selected wheel/tyre size. For further information consult your BMW partner.

⁶ Values for standard six-speed manual transmission (xDrive models standard with eight-speed Steptronic transmission).

⁷ Electronically limited.

⁸ Height 1,488mm with roof antenna.

Values in [] refer to vehicles with eight-speed Steptronic transmission.

WELL TAKEN CARE OF WITH BMW SERVICES:

When you buy a BMW, you can look forward to superb service and comprehensive customer care. For example, the **Condition Based Service** independently tracks both service fluid levels and the condition of parts subject to wear and then notifies you in the display when the vehicle requires servicing. So you only need to go to your BMW service partner when it's really necessary. When you do go, our

qualified BMW service specialists take care of your vehicle using the newest workshop technology and only **original BMW parts**. This service is available worldwide in more than 3,300 BMW service partner establishments in over 150 countries, to provide you with limitless driving pleasure.

BMW SERVICE.



BMW Service Packages*: Individual and stress-free, just for you. Individual, well-thought-out servicing solutions carefully tailored to you and your vehicle. With one-off, predictable costs, BMW Service Packages give you complete peace of mind, so you can enjoy owning a BMW to the very fullest. Whether it's fresh from the showroom or already well-travelled – there's a BMW Service Package for every phase of your vehicle's life. All bringing you maximum quality, expertise and value retention, always at reasonable, transparent rates. And always carefully tailored to you and your BMW. Find out just how stress-free truly individual service can be!

www.bmw.com/serviceinclusive



BMW Mobile Service*: This service is there for you day and night. As soon as you call, we spring into action, and take care of everything that may need doing after an accident or breakdown, with specially trained technicians working – on site or via telephone – to get your car back on the road. We offer comprehensive, country-specific mobility packages for breakdowns, and insurance that covers you in the event of an accident or theft. So if anything untoward does happen, simply call up the BMW accident hotline and we'll go to work. We'll take care of calling the emergency services, a tow truck, a replacement car, notifying your insurance company and much more. For further information please visit www.bmw.com



BMW TeleServices*: With Condition Based Service, you'll be automatically reminded of your next necessary service appointment on the vehicle screen. Provided you've consented, key vehicle data will be relayed to BMW automatically for analysis. Your assigned BMW service partner will access the information and contact you free of charge to make a service appointment as and when necessary. To access BMW Teleservices, the vehicle must be equipped with the optional Intelligent Emergency Call or ConnectedDrive Services. The service can be deactivated at any time you so desire, and you can change your service partner in the iDrive menu or ConnectedDrive portal. Find out more at www.bmw.com/teleservices

BMW FINANCIAL SERVICE.



BMW Financial Services*: Mobility solutions to meet your needs. BMW Financial Services provides you with attractive leasing, finance and insurance options. To find out more, see the price list or go to www.bmwfs.com. Your BMW partner will also be glad to draw up an individual offer for you in person.

THE BMW EXPERIENCE.



BMW TV*: www.bmw.tv enables you to experience the BMW brand in all its diversity. Features, portraits and background reports provide you with information on automobiles, innovations, sports and lifestyle topics.



BMW Driving Experience: The better you control your BMW, the more enjoyment you will derive from driving it. Use our training courses to learn for yourself what it means to reach a car's physical limits on various types of surfaces, and what you have to do to control your vehicle even in extreme situations. For further information please visit www.bmwdrivingexperience.com



BMW Welt: Picking up a car at BMW Welt has always ranked among the best moments for any driver. Turn this moment into one whole unforgettable day: experience the handover of your new BMW as just one part of a programme of activities perfectly tailored to your interests. At BMW Welt, you are surrounded by the BMW Museum, the main BMW factory, and the BMW Group headquarters, representing an exciting history, a breathtaking present – and spectacular visions for the future. Find out more at www.bmw-welt.com/en



BMW Magazine: In BMW Magazine, experience the newest BMW models in front of stunning backdrops. Discover new design trends, travel destinations and the richness of modern life. Encounter people with visionary ideas who are changing the world. Find out more at www.bmw.com/magazine

* May not be available in all countries. Please consult your BMW partner.

SHAPING THE FUTURE – RESPONSIBLY.

In 2015, the BMW Group was once more listed in the World and European Dow Jones Sustainability Index as one of the most sustainable automotive companies worldwide. The development of efficient vehicle concepts and environmentally friendly production processes, including recycling, is an integral part of our philosophy. BMW EfficientDynamics and electric vehicles have enabled us to cut the CO₂ emissions from our European new-vehicle fleet by more than 35% since 1995. We have also reduced the amount of resources used in production, such as water and energy, by 34% between 2006 and 2014, with a reduction to 45% of previous levels aimed at for 2020. In terms of other resources (such as volatile organic compounds, process wastewater and waste) our 45% target was met in 2014, and we will continue to work on further improvement. Production at our engine plant in Steyr has been waste-water free since 2007. And of course, at the end of its service life, every one of our vehicles can be easily and economically recycled. To return your end-of-life vehicle, please contact your BMW partner. For more information on this issue please visit our website.

www.bmw.com/EfficientDynamics
www.bmwgroup.com/responsibility
www.bmw.com/recycling

More about BMW



Sheer
Driving Pleasure

www.bmw.com

The models illustrated in this brochure show the specifications of vehicles produced by BMW AG for the German market. In part, they include optional equipment and accessories not fitted as standard. According to the specific requirements of other markets, alterations in models, standard and optional equipment, as described in this brochure, may occur. For more precise information about country-specific vehicle versions, please contact your local BMW partner. Subject to change in design and equipment.

© BMW AG, Munich/Germany. Not to be reproduced wholly or in part without written permission of BMW AG, Munich.

4 11 005 05920 1 2016 BB. Printed in Germany 2016.

